

**RESOLUTION NO. 704**

**RESOLUTION OF THE BOARD OF DIRECTORS OF  
THE SANTA YNEZ RIVER WATER CONSERVATION DISTRICT  
DECLARING ITS INTENT TO ADJUST DIVISION BOUNDARIES  
AND NOTICE OF HEARING**

**WHEREAS**, Election Code section 22000 requires certain special districts (including Santa Ynez River Water Conservation District) to adjust their division boundaries after each federal decennial census, and using that census as the basis, adjust the boundaries of any divisions so that the divisions are, as far as practicable, equal in population and in compliance with Section 10201 of Title 52 of the United States Code, as amended, to the extent those provisions are applicable; and

**WHEREAS**, Election Code section 22000 further provides that in adjusting the boundaries of the divisions, the board may give consideration to the following factors: (1) topography, (2) geography, (3) cohesiveness, contiguity, integrity, and compactness of territory, and (4) community of interests of the division; and

**WHEREAS**, recently enacted Senate Bill No. 594 provides that the governing board of a district that has a regular election to elect members of its governing board on the same date as the 2022 statewide general election shall adopt adjusted boundaries of the divisions no later than April 17, 2022 (Election Code § 22000.1(b)(1)); and

**WHEREAS**, the Board of Directors of the Santa Ynez River Water Conservation District has determined that it is advisable in order to comply with applicable state law, e.g., Election Code sections 22000 and 22000.1, and in the best interests of the District and the electors, to adjust the boundaries of the District's divisions; and

**WHEREAS**, a proposed adjustment of the boundaries of the divisions based on an analysis of population deviation between divisions has been submitted to the Board of Directors which meets constitutional requirements; and

**WHEREAS**, a memorandum from the General Manager setting forth the proposed adjusted boundaries is on file in the District office in Santa Ynez; and

**WHEREAS**, the Board of Directors desires to call a public hearing to consider the proposed adjustment of the division boundaries;

**NOW, THEREFORE, BE IT RESOLVED AS FOLLOWS:**

**SECTION 1:** The Board of Directors deems it advisable in order to comply with applicable state law, e.g., Election Code sections 22000 and 22000.1, and in the best interests of the District and the electors, to adjust the boundaries of the divisions.

**SECTION 2:** The Board of Directors hereby gives notice that it proposes to adjust the boundaries of the divisions according to the attached maps which were also made

available on the District website (SYRWCD.com). The website will allow for zoom feature and scaling.

**SECTION 3:** The Board of Directors hereby gives notice that a hearing will be held on the 2nd day of March 2022 at 6:30 p.m., at the Vandenberg Village Community Services District, 3745 Constellation Rd., Lompoc, California, with teleconference for remote participation, for the purpose of considering said adjustment of division boundaries.

**SECTION 4:** At the hearing, any member of the public may appear before the Board of Directors and object to the making of the proposed adjustment or adjustments or petition that a adjustment be made otherwise than as proposed.

**SECTION 5:** At the hearing, the Board shall hear all objections and petitions which are presented to the Board, and thereupon the Board may make such adjustment or adjustments in the boundaries of the divisions as it determines to be for the best interests of the District.

**SECTION 6:** Notice of intention to adjust the boundaries of the divisions shall be published at least once a week for two weeks prior to the time appointed for the hearing in some newspaper or newspapers published in each of the counties in which any part of the District is situated.

**WE, THE UNDERSIGNED,** being the duly qualified and acting President and Secretary, respectively, of the Board of Directors of the Santa Ynez River Water Conservation District, do hereby certify that the above and foregoing Resolution was duly and regularly adopted and passed by the Board of Directors at a regular meeting duly held on the 1st day of December 2021 by the following vote:

**AYES,** and in favor thereof, Directors:

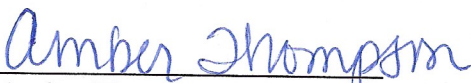
Cynthia Allen  
Mark Altshuler  
Art Hibbits  
Steve Jordan  
Brett Marymee

**NOES,** Directors:

None

**ABSENT/ABSTAINING,** Directors:

None

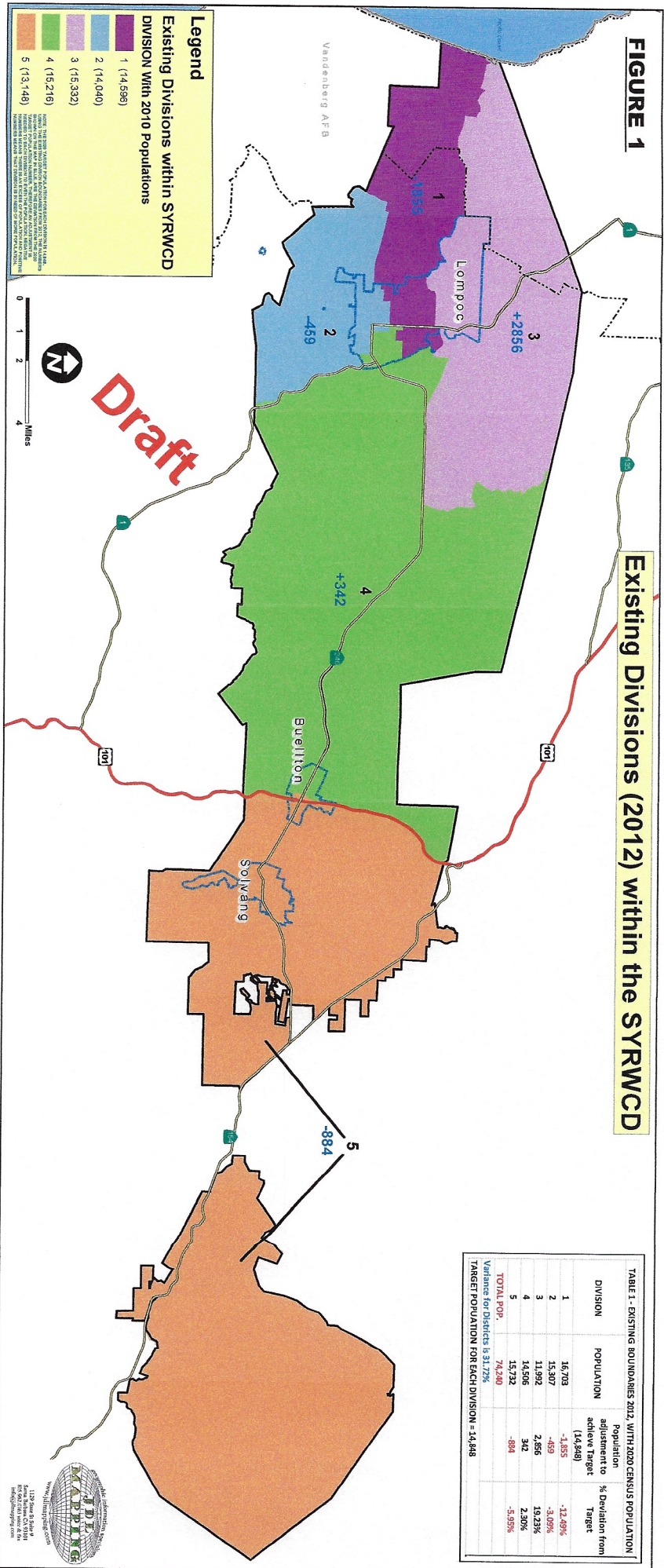
  
Amber Thompson, Secretary

  
Cynthia Allen, President



**FIGURE 1**

**Existing Divisions (2012) within the SYRWCD**



**TABLE 1 - EXISTING BOUNDARIES 2012, WITH 2020 CENSUS POPULATION**

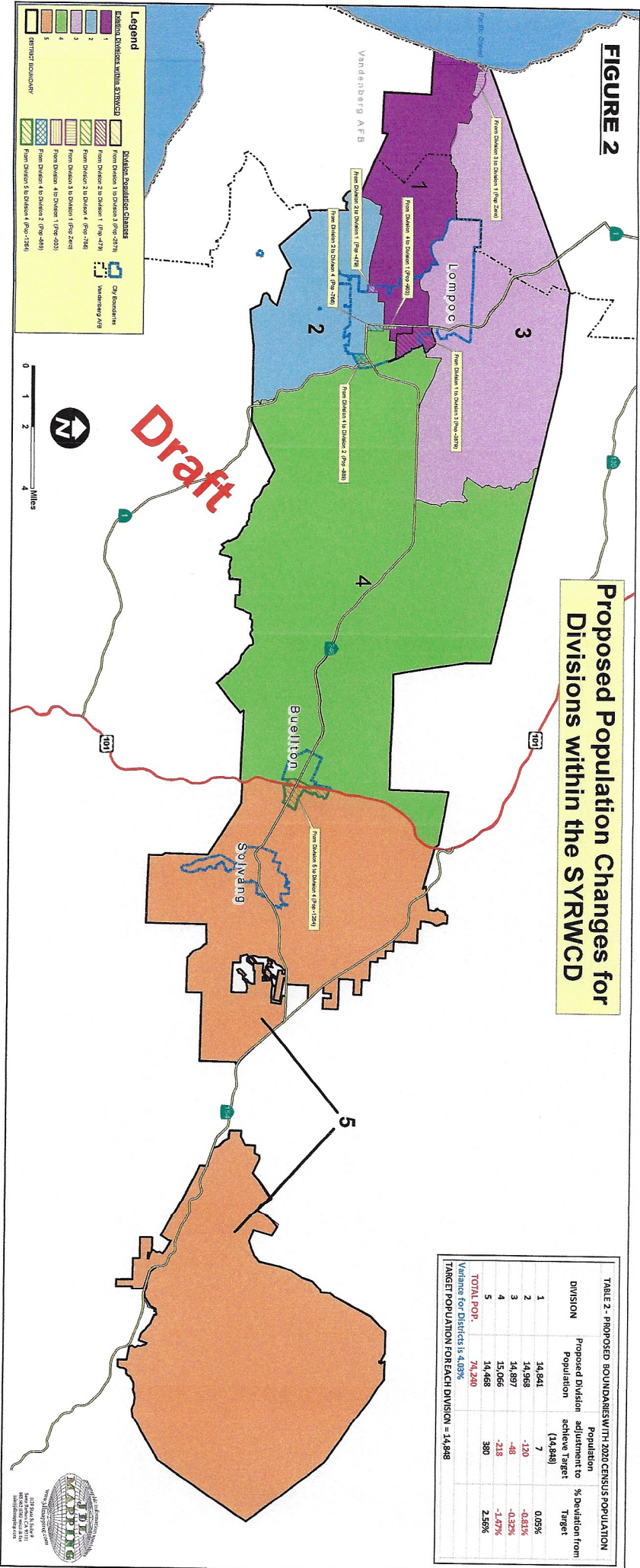
| DIVISION          | POPULATION    | Population adjustment to achieve target (14,848) | % Deviation from Target |
|-------------------|---------------|--|-------------------------|
| 1                 | 16,703        | -1,855   | -12.60%                 |
| 2                 | 15,807        | -659   | -4.44%                  |
| 3                 | 11,992        | 2,856  | 19.21%                  |
| 4                 | 14,505        | 342  | 2.30%                   |
| 5                 | 15,732        | -884   | -5.95%                  |
| <b>TOTAL POP.</b> | <b>74,240</b> |  |                         |

Variance for Districts is 31.72%  
**TARGET POPULATION FOR EACH DIVISION = 14,848**



**FIGURE 2**

**Proposed Population Changes for Divisions within the SYRWCD**



**TABLE 2 - PROPOSED BOUNDARIES WITH 2020 CENSUS POPULATION**

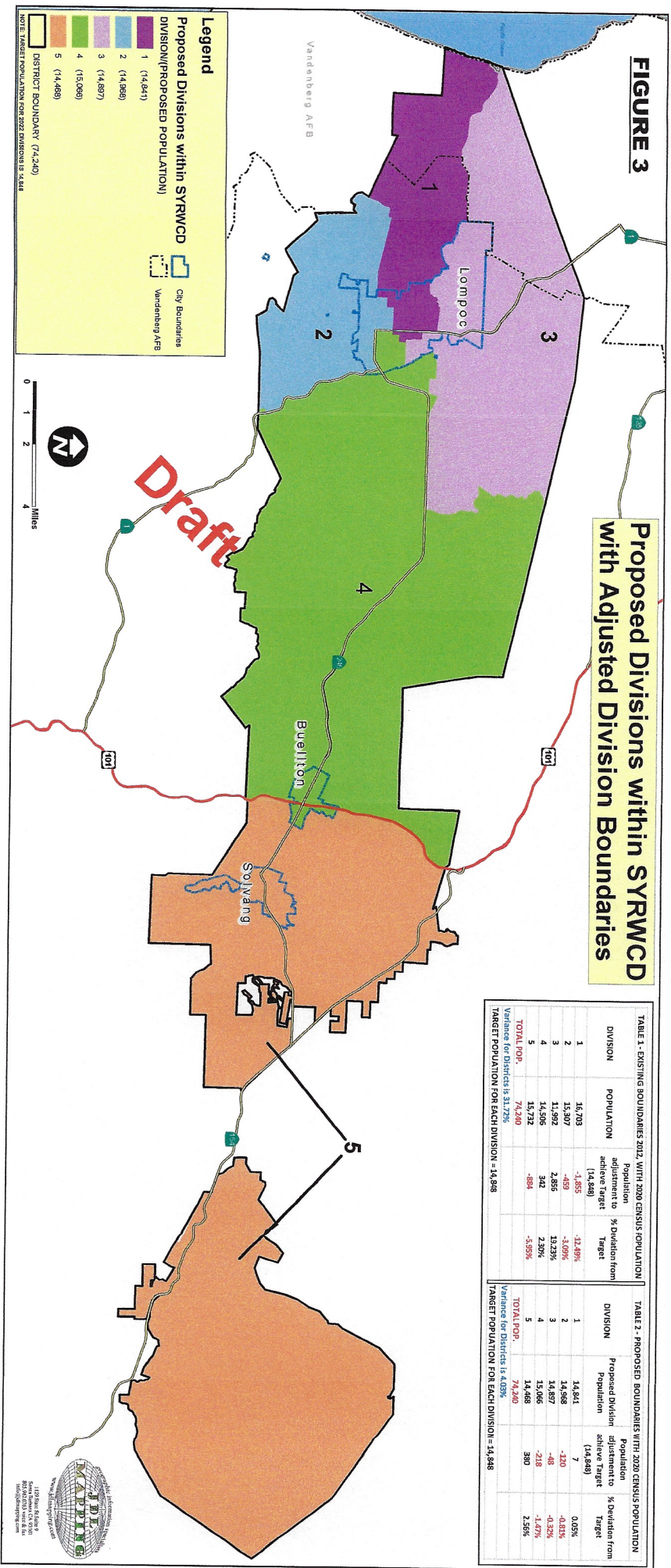
| DIVISION          | Proposed Division Population | Population adjustment to achieve target (14,986) | % Deviation from Target |
|-------------------|------------------------------|--|-------------------------|
| 1                 | 14,941                       | 7  | 0.05%                   |
| 2                 | 14,968                       | -120   | -0.81%                  |
| 3                 | 14,897                       | -48  | -0.32%                  |
| 4                 | 15,065                       | -218   | -1.47%                  |
| 5                 | 14,468                       | 380  | 2.56%                   |
| <b>TOTAL POP.</b> | <b>74,240</b>                |  |                         |

Variance for Districts is 4.03%  
**TARGET POPULATION FOR EACH DIVISION = 14,986**





**FIGURE 3**



**Proposed Divisions within SYRWCD with Adjusted Division Boundaries**

| TABLE 1 - EXISTING BOUNDARIES 2012 WITH 2020 CENSUS POPULATION                   |               |  |                         |  |  |
|--|---------------|--|-------------------------|--|--|
| DIVISION   | POPULATION    | Population adjustment to achieve Target (14,988) | % Deviation from Target |  |  |
| 1  | 16,703        | -1,855   | -12.49%                 |  |  |
| 2  | 15,307        | -459   | -3.10%                  |  |  |
| 3  | 11,992        | 2,855  | 23.23%                  |  |  |
| 4  | 14,598        | 342  | 2.30%                   |  |  |
| 5  | 15,732        | -884   | -5.95%                  |  |  |
| <b>TOTAL POP.</b>  | <b>74,240</b> |  |                         |  |  |
| Variance for Districts is 31.72%<br>TARGET POPULATION FOR EACH DIVISION = 14,988 |               |  |                         |  |  |

| TABLE 2 - PROPOSED BOUNDARIES WITH 2020 CENSUS POPULATION                       |                              |  |                         |  |  |
|---|------------------------------|--|-------------------------|--|--|
| DIVISION  | Proposed Division Population | Population adjustment to achieve Target (14,988) | % Deviation from Target |  |  |
| 1   | 14,841                       | 7  | 0.05%                   |  |  |
| 2   | 14,968                       | -130   | -0.81%                  |  |  |
| 3   | 14,897                       | -48  | -0.32%                  |  |  |
| 4   | 15,065                       | -218   | -1.47%                  |  |  |
| 5   | 14,468                       | 380  | 2.56%                   |  |  |
| <b>TOTAL POP.</b>   | <b>74,240</b>                |  |                         |  |  |
| Variance for Districts is 4.03%<br>TARGET POPULATION FOR EACH DIVISION = 14,988 |                              |  |                         |  |  |

**Legend**

Proposed Divisions within SYRWCD  
DIVISION/(PROPOSED POPULATION)

- 1 (14,841)
- 2 (14,968)
- 3 (14,897)
- 4 (15,065)
- 5 (14,468)

City Boundaries  
Vanderberg AFB

DISTRICT BOUNDARY (74,240)

NOTE: TARGET POPULATION FOR 2020 DIVISIONS IS 14,988

0 1 2 4  
Miles

North Arrow

